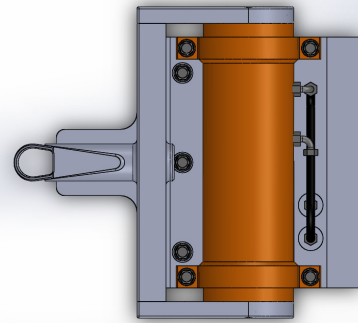
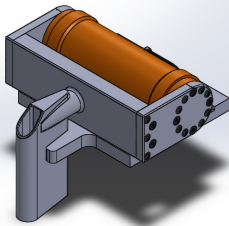
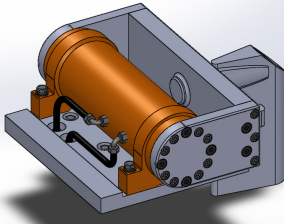




**MARINE  
SURVEY**  
FABRICATION

## Hydraulic Rotating Bow Mount Data Sheet P/N: HYDBM-100

Contact us for further information at 559 696 4020 or matt@finncom-msf.com



### **Mount capacity & Specifications**

- All aluminum is anodized 6061-T6 and all Stainless Steel is type 316.
- Bow Mount is capable of rotating a 100 Lbs. transducer at the end of a 12' Mast.
- Mast rotation is 180°

### **Actuator specifications**

- Radial Load 4000 Lbs.
- Torque 17,000 Inch-Lbs.

### **Power unit & Pump Spec.**

- Requires 230 AC power source & an un-used 20 Amp fuse in panel.
- 2 gallon hydraulic fluid reservoir.

### **Mount Function**

Mount is controlled by a momentary Switch.

### **Mount Dimensions**

Base Plate foot print: (X)13-1/2" x (Y) 15-1/8"  
"Y" dimension assembled 18-7/8"

### **Standard Mast & Flange**

Mast length is 8' long with lower support.  
Flange is welded to mast and matches to a Reson T20 / T50 transducers.